



TRAVERSE MOUNTAIN
MASTER ASSOCIATION

APPROVED FENCING STYLES EXHIBIT F1

***** IF YOU LIVE IN CANYON POINT, TOLL BROTHERS, OR CANYON POINT FIELDSTONE, REFER TO EXHIBIT F2 AND EXHIBIT 3 FOR DIFFERENT FENCING GUIDELINES**

WOOD (6' height)

Sherwin Williams Stain



TM BLVD FENCING STYLE
(Mini Winds or Mini Estates Privacy Fencing)



CANYON WINDS FENCING STYLE



- 6' Solid Cedar Fencing, all wood fencing must be painted or stained.
- Stain any natural color: tans, browns, grays.
- Recommend using a solid color stain. If using a transparent stain, be sure the wood is new. Once fading starts to occur a solid color stain will be needed to keep the fence color uniform. This is why we recommend a solid color stain from the beginning.

METAL (4' - 6' height)

Ameristar



WROUGHT IRON FENCING
4' - 6', Ameristar Montage Styles - Black Powder Coat Finish
(Black aluminum fencing in these styles is also allowed)
Screening is allowed with approval from ARC



**THESE STYLES
ARE NOT APPROVED:**



Warrior

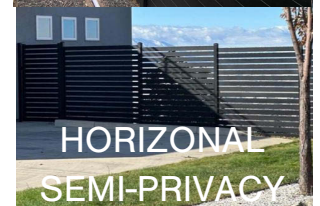


Crescent

Alliance Avimore Breeze



HORIZONTAL
PRIVACY



HORIZONTAL
SEMI-PRIVACY



TRAVERSE MOUNTAIN
MASTER ASSOCIATION

APPROVED FENCING STYLES EXHIBIT F1

*** IF YOU LIVE IN CANYON POINT, TOLL BROTHERS, OR CANYON POINT FIELDSTONE,
REFER TO EXHIBIT F2 AND EXHIBIT 3 FOR DIFFERENT FENCING GUIDELINES

COMPOSITE (6' height)

Bufftech



Trex





TRAVERSE MOUNTAIN
MASTER ASSOCIATION

APPROVED FENCING STYLES EXHIBIT F1

***** IF YOU LIVE IN CANYON POINT, TOLL BROTHERS, OR CANYON POINT FIELDSTONE, REFER TO EXHIBIT F2 AND EXHIBIT 3 FOR DIFFERENT FENCING GUIDELINES**

VINYL (EMBOSSSED/TEXTURED) (6' height)

Horizontal or Vertical

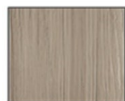
Vinyl Industries &
National Vinyl Products



- 6', Full Privacy with standard or flat cap detail, panels must have multi grain/ multi colored wood look and we recommend the embossed/textured wood grain texture.

- Wet mix installation recommended with post distance of 6' on center.

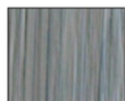
Bufftech



Timber Blend



Frontier Blend



Artic Blend



Brazilian Blend



Honey Blend



Sierra Blend

Plans must be submitted with the Property Improvement Form and approved by the ARC prior to installation.

The ARC expects neighbors to agree on and reach a compromise on shared approved fencing styles, with final approval by the ARC.

If a fence style is out-of-stock or unavailable, the property owner may be required to choose an alternative in-stock HOA-approved fence style that meets their HOA installation deadline. Comparable alternate fencing styles and brands will be reviewed on a case-by-case basis by the ARC.

Alternate "wing wall" fencing styles will be reviewed on a case-by-case basis by the ARC.

*Colors are for depiction purposes only. Check with manufacturer for exact details.